

### DETTAGLI

- Elastico e coulisse in vita
- Chiusura zip
- 2 tasche
- 1 tasca sul retro

### COLORE

- R000 Rigato nero
- R119 Rigato grigio

### TESSUTO

- 70% cotone
- 30% poliestere
- 145 g / m<sup>2</sup>



### TAGLIE

- XS ÷ 5XL
- Regular Fit

Le misure indicate si riferiscono alle taglie **S** per i capi femminili, **L** per i capi maschili. Per i capi a taglia unica le misure indicate sono effettive.

Pantalone dalla vestibilità regular e taglio trendy, realizzato in elegante tessuto gessato 100% cotone dalla mano morbida e resistente al candeggio. Proposto in due varianti: fondo nero con riga grigia e fondo grigio con riga nera. Fascione con coulisse, due tasche sui fianchi e piccola tasca posteriore.

### COLORI DISPONIBILI



R000 Rigato nero



R119 Rigato grigio

TABELLE TAGLIE  
E CORRISPONDENZE

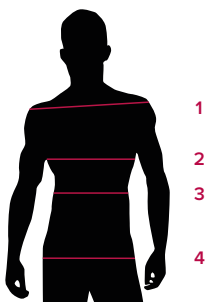
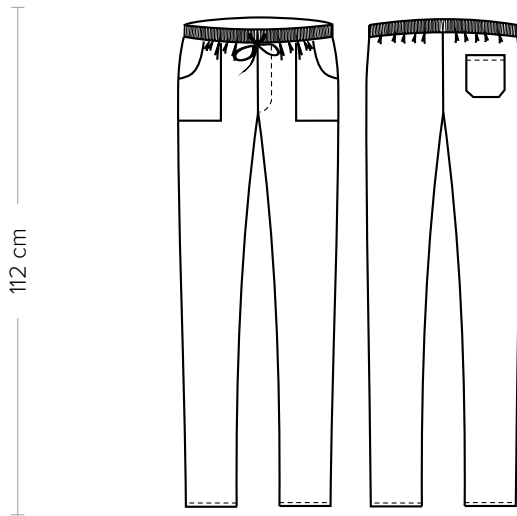


TABELLA ST-P3	REGULAR FIT											
TAGLIA	XXS	XS	S	M	L	XL	XXL	3XL	4XL	5XL	6XL	7XL
1 - SPALLE												
2 - TORACE												
3 - VITA	78-86	86-90	90-94	94-98	98-102	102-108	108-114	114-120	120-126	126-132	132-138	138-144
4 - BACINO	86-90	90-94	94-98	98-103	103-107	107-113	113-119	119-126	126-132	132-138	138-144	144-151

**GUIDA ALLE TAGLIE** **1)** Prendere le misure anatomiche (corpo con abbigliamento intimo) senza stringere mantenendo ben teso il metro. **Nota:** nel caso vogliate indossare dei camici già con dell'abbigliamento sotto prendete le misure già abbigliati. **2)** Nel caso tra le misure prese vi fosse una misura a cavallo fra 2 taglie vi consigliamo di prendere quella più grande. **3)** Le misure della tabella sono espresse in centimetri.



#### DETAILS

- Elasticated waistband with drawstring
- Zip fly
- 2 pockets
- 1 rear pocket

#### SIZES

XS ÷ 5XL  
Regular Fit

#### COLOURS

R000 Black striped  
R119 Grey striped

#### FABRIC

70% cotton  
30% polyester  
145 g / m<sup>2</sup>



The measures indicated refer to sizes **S** for women, **L** for men. For one-size-fits-all garments, the measurements indicated are effective.

Pants with a regular fit and a trendy cut, made of an elegant soft pinstripe fabric (100% cotton) and resistant to bleaching. Presented in two variations: black base with grey stripe and grey base with black stripe. Elasticated waistband with drawstring, two side pockets and a small rear pocket.

#### AVAILABLE COLOURS



R000 Black striped



R119 Grey striped

SIZE TABLES  
AND CORRESPONDENCES

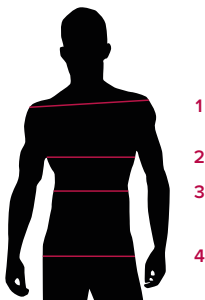


TABLE ST-P3 REGULAR FIT

SIZE	XXS	XS	S	M	L	XL	XXL	3XL	4XL	5XL	6XL	7XL
1 - SHOULDERS												
2 - CHEST												
3 - WAIST	78-86	86-90	90-94	94-98	98-102	102-108	108-114	114-120	120-126	126-132	132-138	138-144
4 - HIPS	86-90	90-94	94-98	98-103	103-107	107-113	113-119	119-126	126-132	132-138	138-144	144-151

**SIZE GUIDE** **1)** Take the anatomical measurements (body with underwear) without tightening, keeping the measuring tape taut. Note: in case you want to wear of the gowns already with the clothing underneath take the measurements already dressed. **2)** If there is a measure between 2 sizes between the measurements taken, we advise you to take the bigger one. **3)** The measurements in the table are expressed in centimeters.