

#### DETTAGLI

- Abbottonatura nascosta con bottoni 4 fori
- 2 tasche

#### TAGLIE

XS ÷ 4XL  
Slim Fit

#### COLORE

1000 Avana

#### TESSUTO

100% cotone  
160 g / m<sup>2</sup>



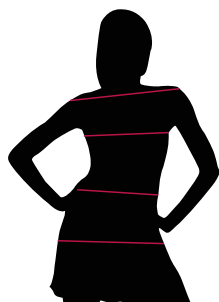
Le misure indicate si riferiscono alle taglie **S** per i capi femminili, **L** per i capi maschili. Per i capi a taglia unica le misure indicate sono effettive.

### COLORI DISPONIBILI



1000 Avana

TABELLE TAGLIE  
E CORRISPONDENZE



1  
2  
3  
4

TABELLA ST-K1 SLIM FIT

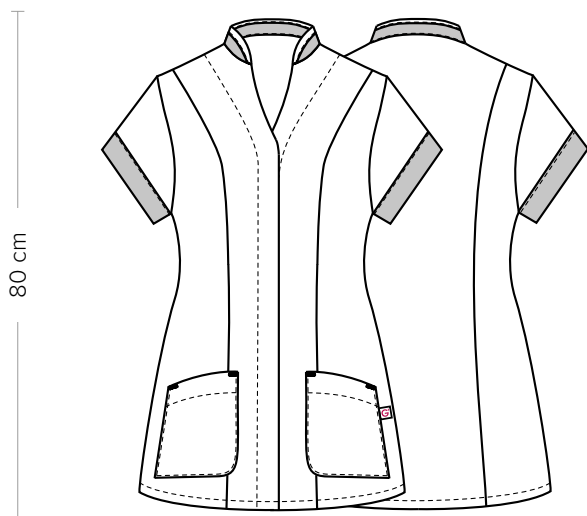
TAGLIA	XS	S	M	L	XL	XXL	3XL	4XL	5XL
<b>1 - SPALLE</b>									
<b>2 - TORACE</b> circonferenza	82-88	88-92	92-96	96-102	102-108	108-116	116-124	124-134	134-144
<b>3 - VITA</b> circonferenza	71-75	75-79	79-83	83-90	90-97	97-107	107-116	116-128	128-138
<b>4 - BACINO</b> circonferenza	92-96	96-100	100-104	104-111	111-117	117-125	125-134	134-143	143-153

**GUIDA ALLE TAGLIE** **1)** Prendere le misure anatomiche (corpo con abbigliamento intimo) senza stringere mantenendo ben teso il metro. Nota: nel caso vogliate indossare dei camici già con dell'abbigliamento sotto prendete le misure già abbigliati. **2)** Nel caso tra le misure prese vi fosse una misura a cavallo fra 2 taglie vi consigliamo di prendere quella più grande. **3)** Le misure della tabella sono espresse in centimetri.

# AURELIA

ITEM CODE  
16P09K867

**Giblor's**  
italian work/life specialist



### DETAILS

- Concealed buttoning with 4-hole buttons
- 2 pockets

### SIZES

XS ÷ 4XL  
Slim Fit

### COLOURS

1000 Avana

### FABRIC

100% cotton  
160 g / m<sup>2</sup>



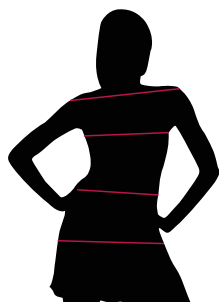
The measures indicated refer to sizes **S** for women, **L** for men. For one-size-fits-all garments, the measurements indicated are effective.

### AVAILABLE COLOURS



1000 Avana

SIZE TABLES  
AND CORRESPONDENCES



1  
2  
3  
4

TABLE ST-K1 SLIM FIT									
SIZE	XS	S	M	L	XL	XXL	3XL	4XL	5XL
<b>1 - SHOULDERS</b>									
<b>2 - CHEST</b> circumference	82-88	88-92	92-96	96-102	102-108	108-116	116-124	124-134	134-144
<b>3 - WAIST</b> circumference	71-75	75-79	79-83	83-90	90-97	97-107	107-116	116-128	128-138
<b>4 - HIPS</b> circumference	92-96	96-100	100-104	104-111	111-117	117-125	125-134	134-143	143-153

**SIZE GUIDE** **1)** Take the anatomical measurements (body with underwear) without tightening, keeping the measuring tape taut. Note: in case you want to wear of the gowns already with the clothing underneath take the measurements already dressed. **2)** If there is a measure between 2 sizes between the measurements taken, we advise you to take the bigger one. **3)** The measurements in the table are expressed in centimeters.

**GIBLORS.COM**