

DETTAGLI

- Abbottonatura nascosta con bottoni 4 fori
- 2 tasche

TAGLIE

XS ÷ 4XL
Slim Fit

COLORE

119 Grigio medio
118 Azzurro

TESSUTO

100% cotone
130 g / m²



Le misure indicate si riferiscono alle taglie **S** per i capi femminili, **L** per i capi maschili. Per i capi a taglia unica le misure indicate sono effettive.

COLORI DISPONIBILI

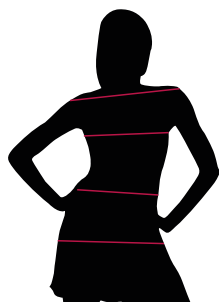


119 Grigio medio



118 Azzurro

TABELLE TAGLIE
E CORRISPONDENZE



1
2
3
4

TABELLA ST-K1 SLIM FIT

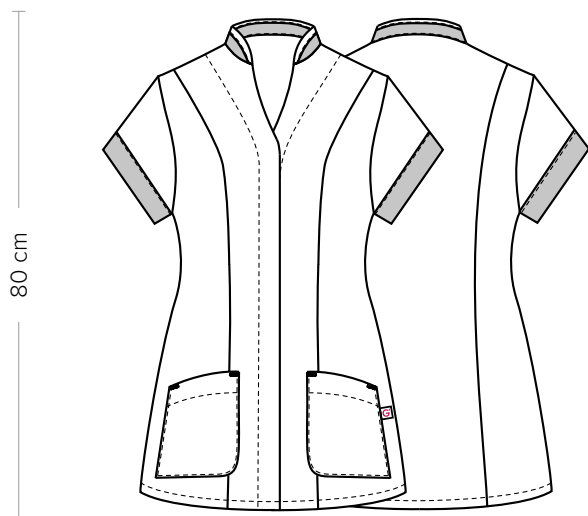
TAGLIA	XS	S	M	L	XL	XXL	3XL	4XL	5XL
1 - SPALLE									
2 - TORACE circonferenza	82-88	88-92	92-96	96-102	102-108	108-116	116-124	124-134	134-144
3 - VITA circonferenza	71-75	75-79	79-83	83-90	90-97	97-107	107-116	116-128	128-138
4 - BACINO circonferenza	92-96	96-100	100-104	104-111	111-117	117-125	125-134	134-143	143-153

GUIDA ALLE TAGLIE 1) Prendere le misure anatomiche (corpo con abbigliamento intimo) senza stringere mantenendo ben teso il metro. **Nota:** nel caso vogliate indossare dei camici già con dell'abbigliamento sotto prendete le misure già abbigliati. **2)** Nel caso tra le misure prese vi fosse una misura a cavallo fra 2 taglie vi consigliamo di prendere quella più grande. **3)** Le misure della tabella sono espresse in centimetri.

AURELIA

ITEM CODE
11P09K50

Giblor's
italian work/life specialist



DETAILS

- Concealed buttoning with 4-hole buttons
- 2 pockets

SIZES

XS ÷ 4XL
Slim Fit

COLOURS

- 119 Medium grey
- 118 Light blue

FABRIC

100% cotton
130 g / m²



The measures indicated refer to sizes **S** for women, **L** for men. For one-size-fits-all garments, the measurements indicated are effective.

AVAILABLE COLOURS



119 Medium grey



118 Light blue

SIZE TABLES
AND CORRESPONDENCES

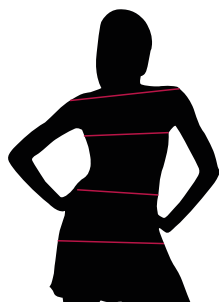


TABLE ST-K1 SLIM FIT

SIZE	XS	S	M	L	XL	XXL	3XL	4XL	5XL
1 - SHOULDERS									
2 - CHEST circumference	82-88	88-92	92-96	96-102	102-108	108-116	116-124	124-134	134-144
3 - WAIST circumference	71-75	75-79	79-83	83-90	90-97	97-107	107-116	116-128	128-138
4 - HIPS circumference	92-96	96-100	100-104	104-111	111-117	117-125	125-134	134-143	143-153

SIZE GUIDE 1) Take the anatomical measurements (body with underwear) without tightening, keeping the measuring tape taut. Note: in case you want to wear of the gowns already with the clothing underneath take the measurements already dressed. **2)** If there is a measure between 2 sizes between the measurements taken, we advise you to take the bigger one. **3)** The measurements in the table are expressed in centimeters.