

TOMAIA

- Pelle vitello nero

FODERA

- Mesh

COPRISOTTOPIEDE

- Comfort plus

SUOLA

- Poliuretano monodensità

COLORE

000 Nero

TAGLIE

39 ÷ 47

LIVELLO DI PROTEZIONE

01 SRC

OMOLOGAZIONE

EN ISO 20347:2012



Scarpa con lacci con tomaia in pelle e fodera in microfibra traspirante. Suola antiscivolo con disegno ad angolo vivo per aumentare la tenuta ed ampio canale per aumentare la rapidità di scarico dei liquidi.

COLORI DISPONIBILI



000 Nero



Anti-scivolo

UPPER

- Black calfskin

LINING

- Mesh

INSOLE COVER

- Comfort plus

SOLE

- Dual density polyurethane
- Non-skid

COLOURS

000 Black

SIZES

39 ÷ 47

PROTECTION LEVEL

01 SRC

COMPLIANCE

EN ISO 20347:2012

Lace-up shoe with leather upper and breathable microfiber lining. Non-slip sole with sharp angle design to increase grip and wide channel to increase the speed of liquid discharge.

AVAILABLE COLOURS



000 Black

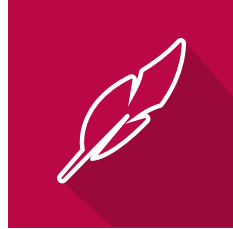


Non-skid

LEGENDA DELLE ICONE / LEGEND OF ICONS



Assorbimento energia al tallone
Energy absorption at heel



Super leggera e confortevole
Super light and comfortable



Suola resistente agli oli/acidi
Oil /acid resistant outsole



Tomaia in microfibra
Microfiber upper



Suola antiscivolo
Non-slip sole



Protezione dita contro un urto di 200J
Toe protection with resistance of 200J



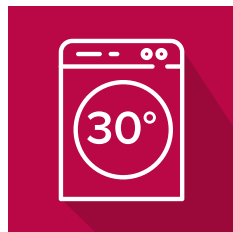
Resistente agli idrocarburi
Hydrocarbon resistant



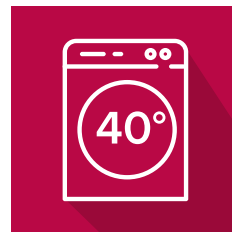
Tomaia resistente all'acqua
Water resistant upper



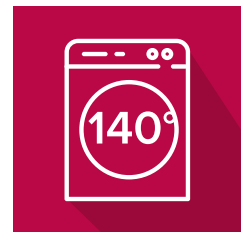
Antistatica
Antistatic



Lavabile a 30°
Washable 30°



Lavabile a 40°
Washable 40°



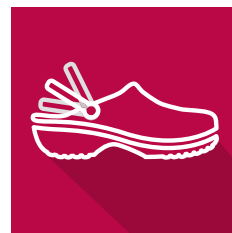
Lavabile a 140°
Washable 140°



Arco della suola con striature
Arch with stria



Suola con rilievi
Ribbed sole



Cinturino mobile
Folding heel strap



Elettrostatico
Electrostatic